

Integration Note

| | |
|-------------------------|--|
| Manufacturer: | Anthem |
| Model Number(s): | MRX-540 MRX-740 MRX-1140 AVM-70 AVM-90 |
| g! Core Module Version: | g!8.3 |
| Driver Developer: | Chowmain Software & Apps |
| Document Revision Date: | January 22, 2021 |

Overview & Supported Features

Features

- Control over
 - Zone 1 + 2
 - Power
 - Input Switching
 - Volume control
 - Mute control
 - Zone 1 Settings
 - Speaker Profiles
 - Audio Listening Modes
 - Dolby Dynamic Range
 - Front Panel Brightness
- Feedback over
 - Zone 1 + 2
 - Power
 - Input Switching
 - Volume control

- Mute control
- Zone 1 Settings
 - Speaker Profiles
 - Audio Listening Modes
 - Dolby Dynamic Range
- Device Region
- Serial Number
- Software Version
- Software Build Date
- Hardware Revision
- Model Number

Any feature not specifically noted as supported should be assumed to be unsupported.

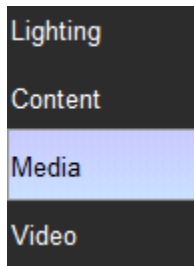
g! Configuration

There are 2 versions of the driver designed for both serial and IP control. Please install the correct version of the driver to suit the control type you are using.

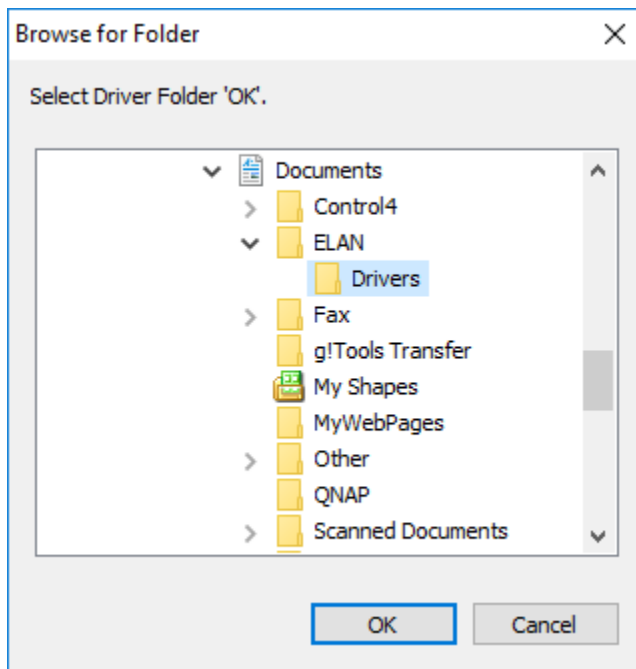
Installation Process

Please follow connect the amplifier / pre-amplifier up via RS232 serial or via IP before proceeding with the g! Configuration steps below.

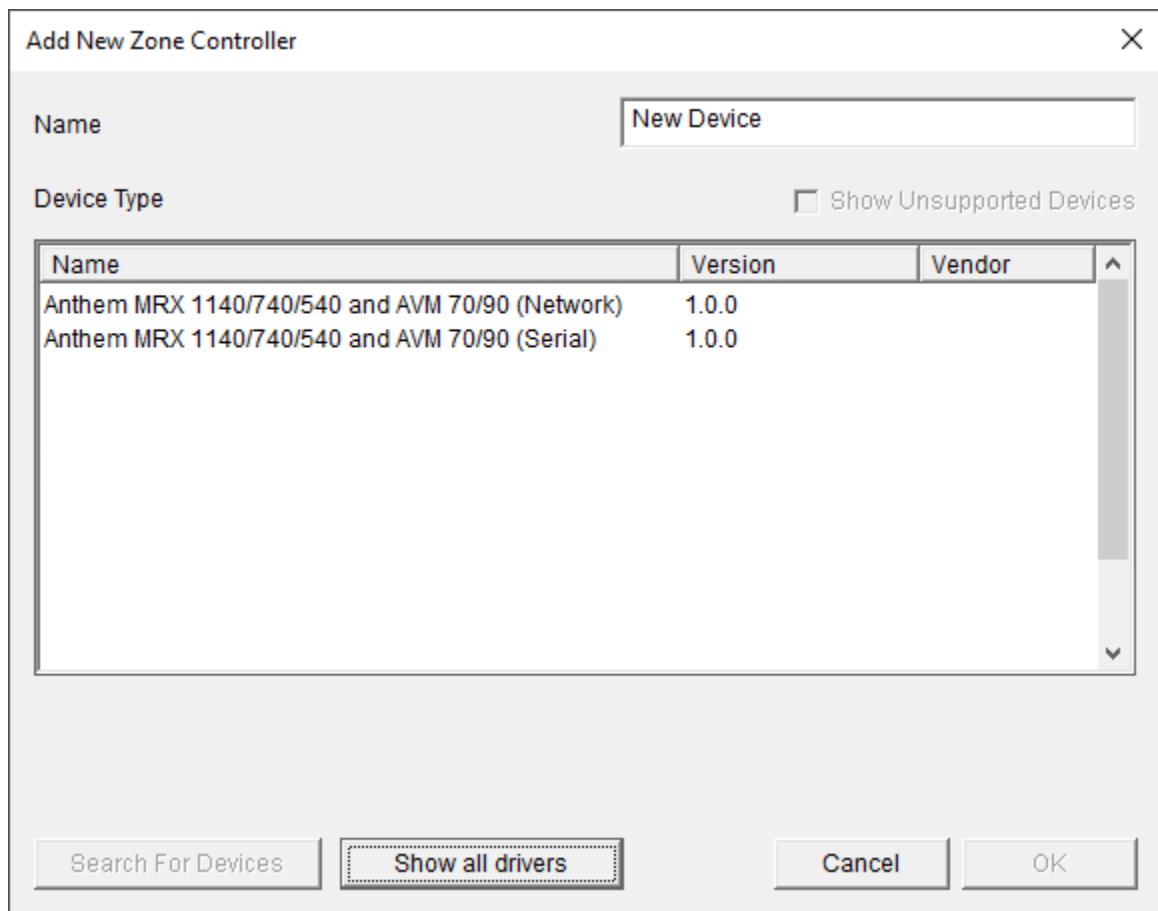
1. Extract the file to your preferred ELAN driver storage location.
2. In configurator click on the Media tab



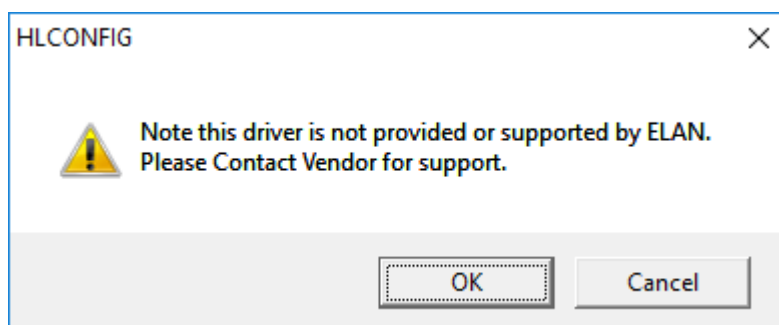
3. Click on the arrow next to Zone Controllers
4. Click on Add New Zone Controller
5. Click on the Search Folder button
6. Select your driver folder and press ok



7. Select the driver that suits the amplifier model and the communications method you will be using.

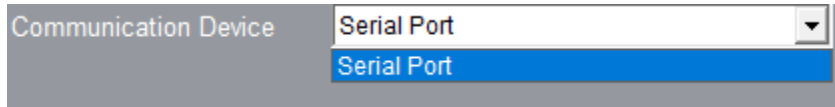


8. Configurator will warn you that the driver is not provided or supported by Elan. Click on OK.

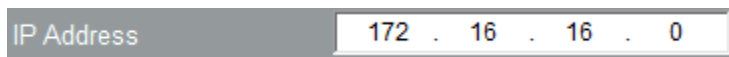


9. Highlight the Amplifier driver

10. If you are using serial control set the Communications Device to the appropriate device (note you may need to add in the serial port if you have not done so already)



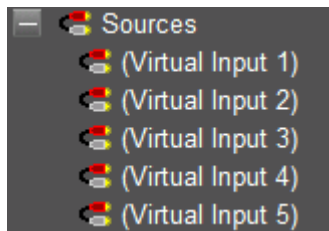
11. If you are using network control set the IP address to the static ip or reserved ip of the amplifier.



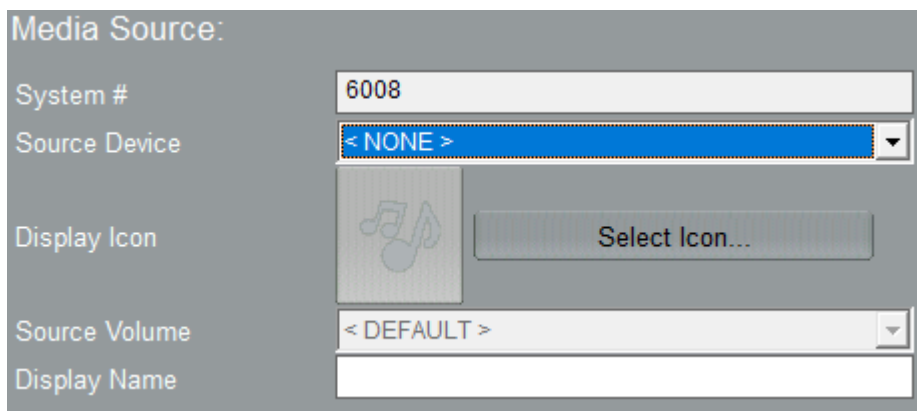
12. The driver will now automatically populate the Device Region, Serial Number, Software Version, Software Build Date, Hardware Region and Model Number fields.

13. If you have changed the default Bluetooth or Streaming virtual inputs please set this in the 'Bluetooth input' and 'Streaming input' drop down boxes.

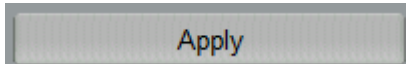
14. Expand Sources and highlight the source you want to assign.



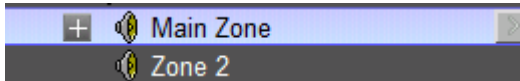
15. Select the source you want to assign in the Source Device dropdown box.



16. Click on the Apply Button



17. Expand Zones and select the Zone you want to configure



18. Name the Zone and apply any relevant configuration

Audio Zone: Main Zone

| | |
|--------------------|-----------|
| Name | Main Zone |
| Location | |
| System # | 38706 |
| Universal Receiver | < NONE > |
| Display 1 | < NONE > |
| Display 2 | < NONE > |
| Slave Zone 1 | < NONE > |
| Slave Zone 2 | < NONE > |
| Turn On Source | < NONE > |
| Hide Volume | No |
| Matrix Only | No |
| Audio Return Input | < NONE > |

19. Congratulations you have successfully setup the amplifier driver for ELAN.

g! CONFIGURATION DETAILS

The following table provides settings used in Configurator when connecting to Sky+HD / SkyQ devices. Please refer to the Configurator Reference Guide for more details.

| Devices | Variable Name | Setting | Comments |
|-----------------|---------------------|--|----------|
| Zone Controller | Name | <User Defined> | |
| | System # | <Auto Detect> | |
| | Driver Version | <Auto Detect> | |
| | Driver Vendor | Chowmain Software & Apps | |
| | Device Type | <Auto Detect> | |
| | Device Region | <Auto Detect> This is the device region pulled in from feedback | |
| | Serial Number | <Auto Detect> This is the device's serial number pulled in from feedback | |
| | Software Version | <Auto Detect> This is the device's software version pulled in from feedback | |
| | Software Build Date | <Auto Detect> This is the device's software build date pulled in from feedback | |
| | Hardware Revision | <Auto Detect> This is the device's hardware revision pulled in from feedback | |
| | Model Number | <Auto Detect> This is the device's model number pulled in from feedback | |

COMMON MISTAKES

1. If network communication is chosen then a static or reserved IP address must be assigned.
2. If the volume limit is set on each zone then the volume bar will not go past that volume in ELAN (by design). The volume limit can be set in the device's web interface.
3. Speaker Profiles, Dolby Dynamic Range, Audio Listening Modes and Front Panel Brightness can be accessed via the driver's settings page.

ELAN DEVELOPER PARTNER INFORMATION

This ELAN driver was commissioned and supported by:



<http://www.anthemav.com>