



# Anthem MRXx40 Installation and Usage Guide

Date: Wednesday, 17 February 2021  
Authors: Richard Mullins



# Contents

<b>Overview.....</b>	<b>3</b>
<b>Features.....</b>	<b>4</b>
<b>Installation.....</b>	<b>6</b>
Import TCM.....	6
Add the module to your project.....	7
Install Core Module.....	7
Network Settings.....	8
<b>System Parameters.....</b>	<b>9</b>
Debug mode and logging.....	9
<b>Two Way Commands.....</b>	<b>10</b>
Power.....	10
Input.....	10
Volume.....	10
Mute.....	10
Speaker Profile.....	10
ARC Control.....	11
Listening Mode.....	11
Trigger Control.....	11
Dolby Dynamic Range.....	12
Dolby Surround Centre Spread.....	12
Custom Message.....	12
<b>Device Events.....</b>	<b>13</b>
Power State.....	13
Mute State.....	13
Input State.....	13
Speaker Profile.....	13
<b>Version 1.0.0.....</b>	<b>14</b>

## Overview

The Anthem MRX-x40 URC module gives you full control of your Anthem REceiver, supporting the MRX-540, MRX-740, MRX-1140, AVM70 or AVM90. The module is built as a receiver module for quick programming and also supports a variety of two way commands for more advanced programming.

The Anthem provides up to 30 configurable inputs and multiple zones, easily programmable using Accelerators Inputs and Outputs programming. Two Way commands allow easy access to advanced features like changing speaker profiles, enabling Anthem Room Correction or Changing the Dolby Dynamic Range to night mode. you can even display a custom message with up to four lines of text on the front panel of the unit.

The module also provides a selection of event that you can use to trigger custom automation if the receiver changes state, regardless of whether that was trigger by URC, or on the Anthem.



## Features

The Anthem MRX module is designed to give you comprehensive control, while still being easy to configure and get running.

- All standard URC control directly supported, just drop the module in and your ready to go
- Driver is configured with 30 inputs and two zones for quick programming in the AV inputs and output step in Accelerator
- With 11 different Two Way Commands, most advanced features are easily accessible in your macros
  - Control Power for each your selected zone
  - Directly select an input for each your selected zone
  - Control Volume and mute for each your selected zone
  - Set a preconfigured speaker profile for your selected input
  - Enabled or disable Anthem Room Control for your selected input
  - Directly set a listening mode
  - Control the 3 12V triggers
  - Set the Dolby Dynamic Range for late night listening
  - Set the Dolby Centre Spread
  - Send a 4 line custom message to the front panel of the Anthem
- Use Automation Events to trigger your macros when
  - Power for your selected zone changes to ON or OFF
  - Mute for your selected zone changes to ON or OFF
  - A a matching input is selected in your specified zone
  - When a matching speaker profile is selected in your specified zone
- All Anthem IR codes are simulated using standard One Way commands in the driver

a.Auto Macro Generation
b.Macro By Room
c.Special Macros
d.Automation Macros
e.TKP-100 Macros

Select Room :

Rack

Main

- Anthem
- SKY Q
- Off Site Option
- Z1 ON
- Z1 INP1
- Z1 VOL
- Z1 MUTE
- Profile
- ARC
- Mono
- Trigger
- Dolby
- Spread
- Message
- Power Button
- Room Power Off

Macro : Z1 ON

**Connected Data [Anthem, Z1 ON]**

2-Way Module Command

Name :

Available Devices :

Available Command :

- Power
- Power
- Input
- Volume
- Mute
- Speaker Profile
- ARC Control
- Listening Mode
- Trigger Control
- Dolby Dynamic Range
- Dolby Surround Centre Spread
- Custom Message

Variable :

Parameters

Zone

State

Description

Prev Next

Create Variable

OK Cancel

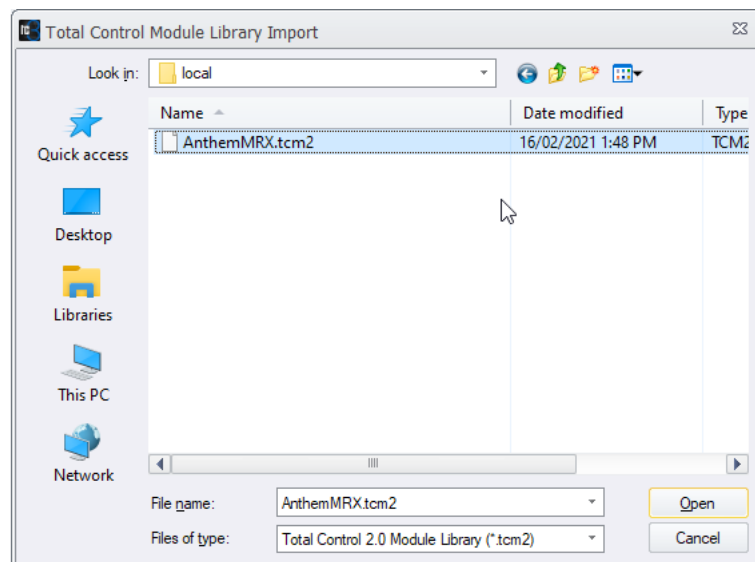
Connected Device	Connected Device
Rack	Rack
Zone 1 (Anthem)	Zone 2 (Anthem)
MENU	MENU
INFO	INFO
EXIT	EXIT
LEFT	LEFT
RIGHT	RIGHT
UP	UP
DOWN	DOWN
SELECT	SELECT
0	0
1	1
2	2
3	3
4	4
5	5
6	6
7	7
8	8
9	9
VOLUME +	VOLUME +
VOLUME -	VOLUME -
MUTE ON	MUTE ON
MUTE OFF	MUTE OFF
MUTE	MUTE
POWER ON	POWER ON
POWER OFF	POWER OFF
Input1	Input1
Input2	Input2
Input3	Input3
Input4	Input4
Input5	Input5
Input6	Input6
Input7	Input7
Input8	Input8
Input9	Input9
Input10	Input10
Input11	Input11
Input12	Input12

## Installation

To install the module, you will need to do the following

### Import TCM

From the file menu, Import TCM Files



## Add the module to your project

In Step 4. Add Other Drivers. You will need to add the module, once for each Anthem in your project. If you have three receivers then you will need to add the module three times.

### Install Core Module

Step 1 - select a shared room for the module

Step 2 - select My

Step 3 - select IP Database

Step 4 - select AVR's and Amplifiers

Step 5 - select ANTHEM

Step 6 - Your model, eg MRX-1140

Step 4 Add Non-URC Devices - Rack

a.Add Selected Modules b.Create New Driver c.Test

1.Select Room : Rack  
Previous Next

2.Select Database :  
☐ URC ☒ My

3.Select Module Type :  
IP Database

4.Select Category :  
AVR's and Amplifiers

5.Select Brand : ANTHEM

6.Select Model :  
AVM-70  
AVM-90  
MDX-16  
MDX-8  
MRX-1140  
MRX-540  
MRX-740

7.View Function List  
Power  
POWER ON  
POWER OFF  
Volume/Mute Functions  
VOLUME +  
VOLUME -  
MUTE ON  
MUTE OFF  
MUTE  
Input Functions  
Input1  
Input2  
Input3  
Input4  
Input5  
Input6  
Input7  
Input8  
Input9  
Input10  
Input11  
Input12  
Input13  
Input14  
Input15  
Input16  
Input17  
Input18  
Input19  
Input20  
Input21  
Input22  
Input23  
Input24  
Input25

## Network Settings

Finally go to Step 6. Network Settings and Choose Non URC Devices. In the IP Address field enter the IP address for each Anthem receiver in your project. Optionally you can enter a value for the port (if you've changed it) or just leave it on the default - 14999.

Step 6 Network Settings: Other Devices

a.LAN & Wifi   b.URC Device   **c.Non URC Device**

Room	Device	IP Address	Port
Rack	SKY Q	172.16.1.123	49160
Rack	Anthem	172.16.1.91	14999

Ping Selected Device



## System Parameters

The Anthem MRX module does not require any system parameters, but there is one available.

System parameters are entered in the following format

KEY=VALUE

The following table details the system parameters that work with this module.

KEY	VALUE
DEBUG	Puts the module into its debug mode

### Debug mode and logging

TO enable logs, you need to add the DEBUG parameter and set it to ON. This will write log files to the processor that can be retrieved via FTP. See the Logging section at the end of this document for details.

DEBUG=ON

## Two Way Commands

The Anthem MRX has a number of Two Way commands that can be used to

### Power

The Power command can be used to turn a specified zone on or off.

Parameters	Description	Type	Allowed Values
Zone	The Anthem Zone	Number	1, 2
State	The new state you want to set	Drop Down	ON, OFF

### Input

The Input command can be used to change to the selected input for the specified zone

Parameters	Description	Type	Allowed Values
Zone	The Anthem Zone	Number	1, 2
Number	The Input Number to change to	Number	1-30

### Volume

The Volume command can be used to change volume level (as a percentage) for the specified zone

Parameters	Description	Type	Allowed Values
Zone	The Anthem Zone	Number	1, 2
Volume	The Volume % to change to	Number	1-100

### Mute

The Mute command can be used to set or clear the mute for the specified zone.

Parameters	Description	Type	Allowed Values
Zone	The Anthem Zone	Number	1, 2
State	The new state you want to set	Drop Down	ON, OFF

### Speaker Profile

The Speaker Profile command can be used to set a new speaker profile for the specified input

Parameters	Description	Type	Allowed Values
Profile	The Speaker Profile to Set	Number	1-2
Input	The Input Number for the change	Number	1-30

## ARC Control

The ARC control command can be used to enable or disable the Anthem Room Correction for the specified input

Parameters	Description	Type	Allowed Values
State	The new state you want to set	Drop Down	ON, OFF
Input	The Input Number for the change	Number	1-30

## Listening Mode

The Listening Mode command can be used to change to listening mode for the main zone to of the following modes. NOTE: Not all of the modes are available for all input types. If the mode is not available then no mode change will occur.

### Mode Drop Down

None

AnthemLogic-Cinema

AnthemLogic-Music

Dolby Surround

DTS Neural:X

DTS Virtual:X

All Channel Stereo

Mono

All Channel Mono

## Trigger Control

The Trigger Control command can be used to turn one of the three available 12V triggers on or off.

Parameters	Description	Type	Allowed Values
Trigger	The Trigger to change	Drop Down	1-3

Parameters	Description	Type	Allowed Values
State	The new state you want to set	Drop Down	ON, OFF

## Dolby Dynamic Range

The Dolby Dynamic Range command can be used to change the range to one of the following values

### Range Drop Down

Normal

Reduced

Late Night

## Dolby Surround Centre Spread

The Dolby Surround Centre control command can be used to enable or disable the Dolby Surround Centre Function.

Parameters	Description	Type	Allowed Values
State	The new state you want to set	Drop Down	ON, OFF

## Custom Message

The Custom Message Command can be used to send up to four lines of custom text to the front panel of the Anthem receiver. This can also be used to hide or show the message. If the Display Message parameter is set to OFF then all the text lines will be ignored. NOTE: the string can only be made up of characters a-z and 0-9. Upper and lower case text is allowed and the font is proportional so if the string doesn't fit it will be clipped.

Parameters	Description	Type	Allowed Values
Display Message	The new state you want to set	Drop Down	ON, OFF
Line 1	The first line of text	String	valid characters
Line 2	The second line of text	String	valid characters
Line 3	The third line of text	String	valid characters
Line 4	The fourth line of text	String	valid characters

## Device Events

There are four device events available that will trigger when the receiver changes state, whether that is from URC or some other means.

Edit Automated Settings

Name :  
Group Listening Speaker Profile - Zone 1

Available Devices :  
Anthem [Rack]

Available Event :  
Speaker Profile

Option :

Parameters

Input (1 - 30)  
1

Profile  
3

Description  
Trigger when speaker profile matches for selected input

Prev Next

OK Cancel

## Power State

The Power event can be used to drive custom automation by providing a trigger when the power goes ON or OFF for your selected zone.

## Mute State

The Power event can be used to drive custom automation by providing a trigger when the mute goes ON or OFF for your selected zone.

## Input State

The Power event can be used to drive custom automation by providing a trigger when the input change to the one your specify for the selected zone.

## Speaker Profile

The speaker profile event will trigger when the speaker profile changes to the one you specify for the selected input.

## Version 1.0.0

- Initial release